

**CERTIFIED LAND CORNER RECORDATION**

**DESCRIPTION OF CORNER EVIDENCE FOUND, AND ORIGINAL RECORD (If known)**

LOCATION Found standard G.L.O. brass cap monument 4" below road surface.

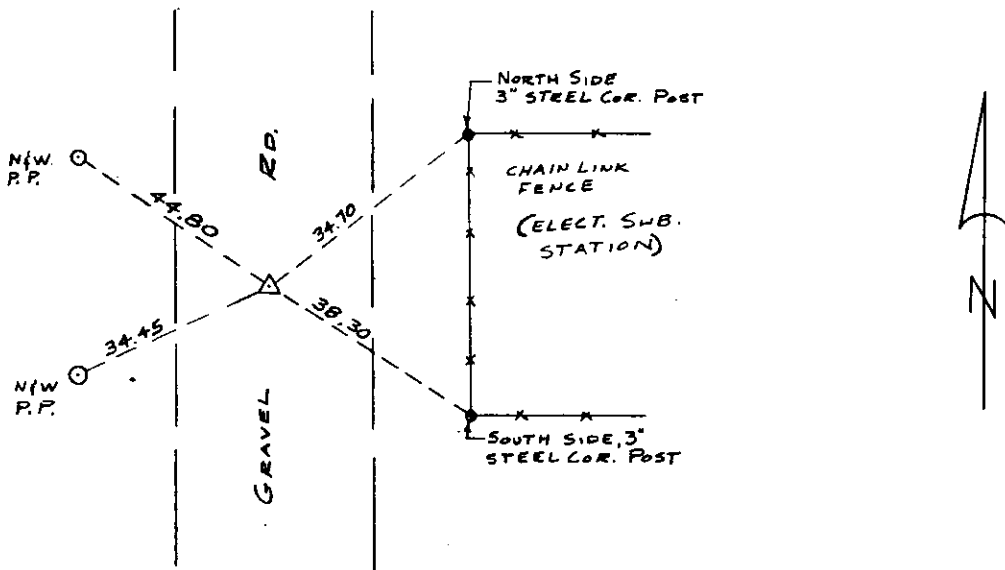
1/4  
S.10 S.11

T.12N., R.62W.

**DESCRIPTION OF MONUMENT AND ACCESSORIES ESTABLISHED TO PERPETUATE THE ORIGINAL LOCATION OF THIS CORNER:**

See ties below.

**SKETCH, WITH COURSE AND DISTANCE TO ADJACENT CORNER IF DETERMINED IN THIS SURVEY.  
(May Sketch or Paste Reproduction on Reverse Side.)**



I, JOHN A. STEIL certify that I have carefully performed or reviewed the work done on the diagrammed corner as reported on this recordation form and approve the same.

*John A. Steil*  
Signature of Surveyor

2500  
Registration No.

STATE OF WYOMING,  
Office of Clerk and Recorder,  
County of Laramie

**568001**

This "corner record" was filed for record on the \_\_\_\_\_ day of FEB 15 1980, 19\_\_\_\_, was noted on the cross-index plat and is assigned page No. \_\_\_\_\_, in book No. \_\_\_\_\_

*James C. Whithead*  
County Official

Cross Index No.	T. <u>617</u>	T. <u>12</u>	R. <u>62</u>	Mer.
	_____	_____	_____	Mer.
	_____	_____	_____	Mer.
	_____	_____	_____	Mer.
	_____	_____	_____	Mer.
	_____	_____	_____	Mer.

G-17 12-62

